

PROHS Equipamento Hospitalar
e Serviços Associados, S.A.

Rua do Castanhal, 316
Z. Industrial Maia I Sector II
Apartado 6019 EC Outeiro
4476-908 **Maia — Portugal**

| T | +351 229 059 170
| F | +351 229 015 900
| E | prohs@prohs.pt
| W | www.prohs.pt

Surgical Sink

PROHS®



Surgical Sink

Intended for washing and disinfecting hands and forearms of health professionals.

Surgical Sink - ST

Technical Characteristics

- Fully built in AISI 304 stainless steel.
- Body constructed with round surfaces.
- Operation of taps automatically through photocell.
- Models with 1, 2 and 3 taps.

Brand	Model	Dimensions (mm)
		W. x L. x H.
Prohs	1P-ST	750 x 550 x 950
	2P-ST	1500 x 550 x 950
	3P-ST	2000 x 550 x 950

Can be produced in different dimensions.



Surgical Sink - ST

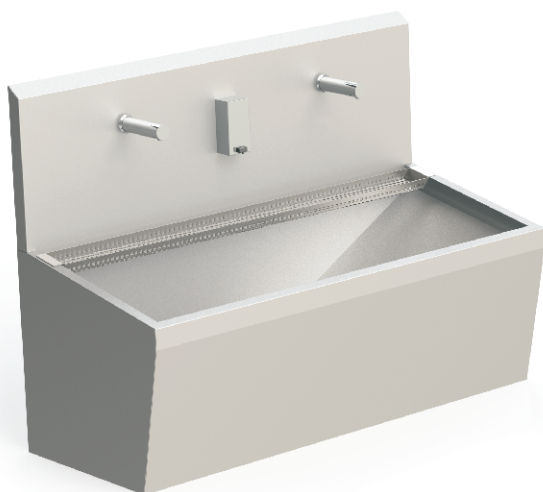
Surgical Sink - MR

Technical Characteristics

- Fully built in AISI 304 stainless steel.
- Body constructed with straight surfaces.
- Operation of taps automatically through stack.
- Models with 1, 2 and 3 taps.

Brand	Model	Dimensions (mm)
		W. x L. x H.
Prohs	1P-MR	750 x 550 x 915
	2P-MR	1500 x 550 x 915
	3P-MR	2000 x 550 x 915

Can be produced in different dimensions.



Surgical Sink - MR

Accessories

- Support brush.

Options

- Soap dispenser.
- Support.

Due to product improvement and development, PROHS reserves the right to make changes without notice.